



Chelsea PTO 276 Parts Manual

Pro Gear Chelsea 276 Series PTO parts manual to assist in identifying the parts for your Chelsea Power Take Off unit.

If you need any assistance identifying the correct Power Take Off unit for your truck and equipment, contact your Chelsea replacement part specialists at Pro Gear and Transmission.

Pro Gear stocks every part for your Parker Chelsea PTO including: PTO housings, mounts, driveshafts, gears, bearings, gaskets, cable shift cover assembly, post and plate assembly, brackets, stud kits, seal kits, lever control assembly, air shift cover assembly, direct mount pump conversion kits, stud kits including English and metric references, CAT D&H parts and much more.

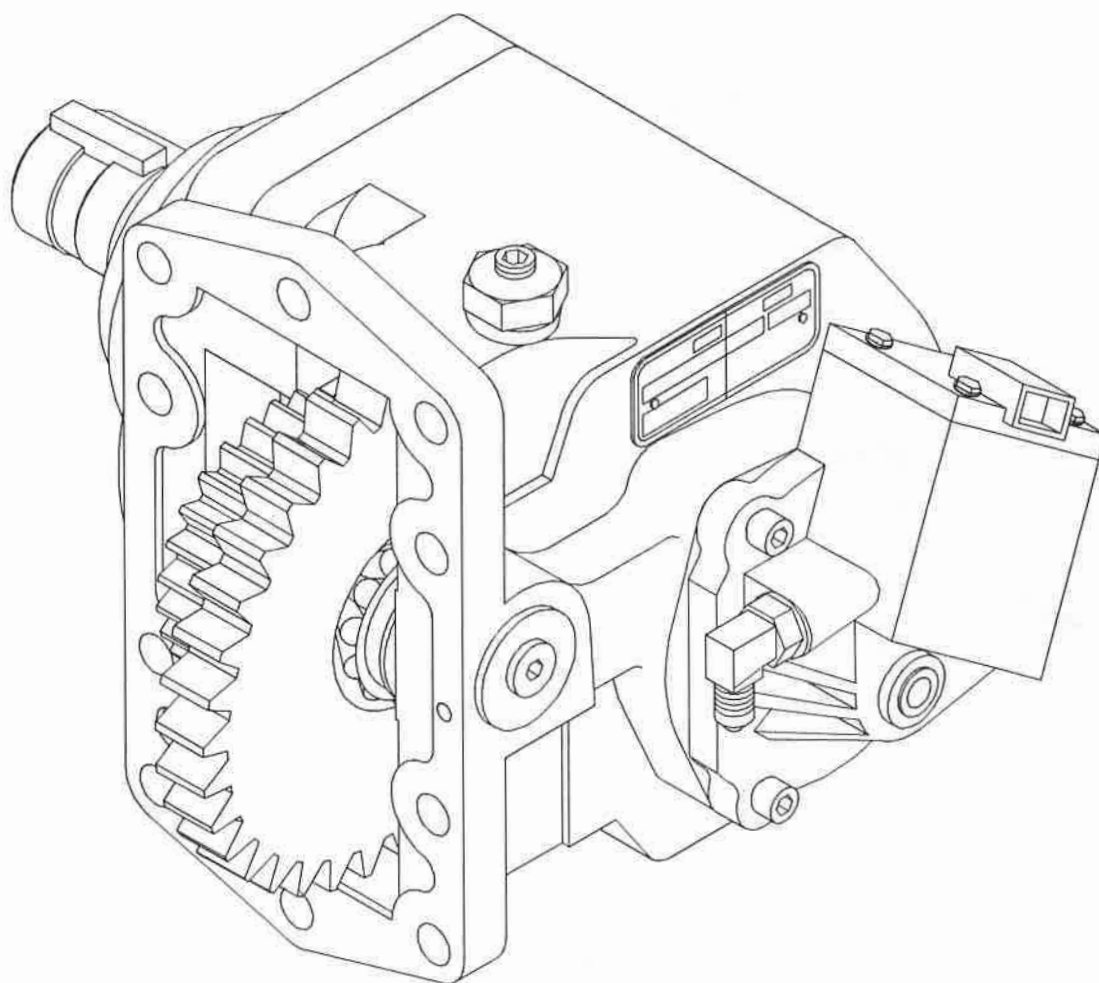
Pro Gear Transmission has same day shipping and 1000's of products in stock and ready to ship internationally for your next project.

For parts or service contact the Chelsea specialists at Pro Gear & Transmission, Inc.

1 (877) 776-4600
(407) 872-1901
parts@eprogear.com

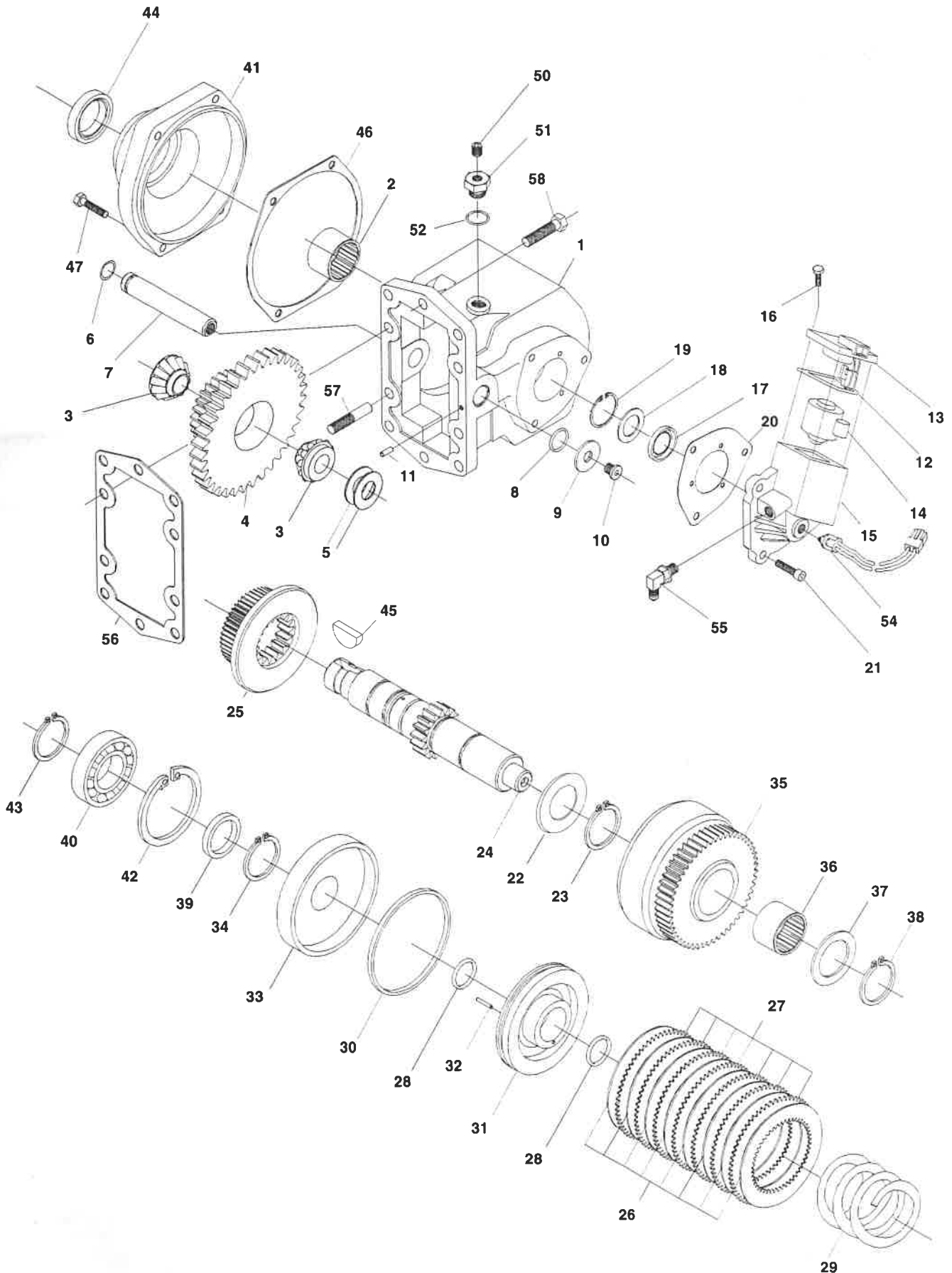
276 Series Power Take-Off

Power Shift for Allison World Class Automatic Transmissions



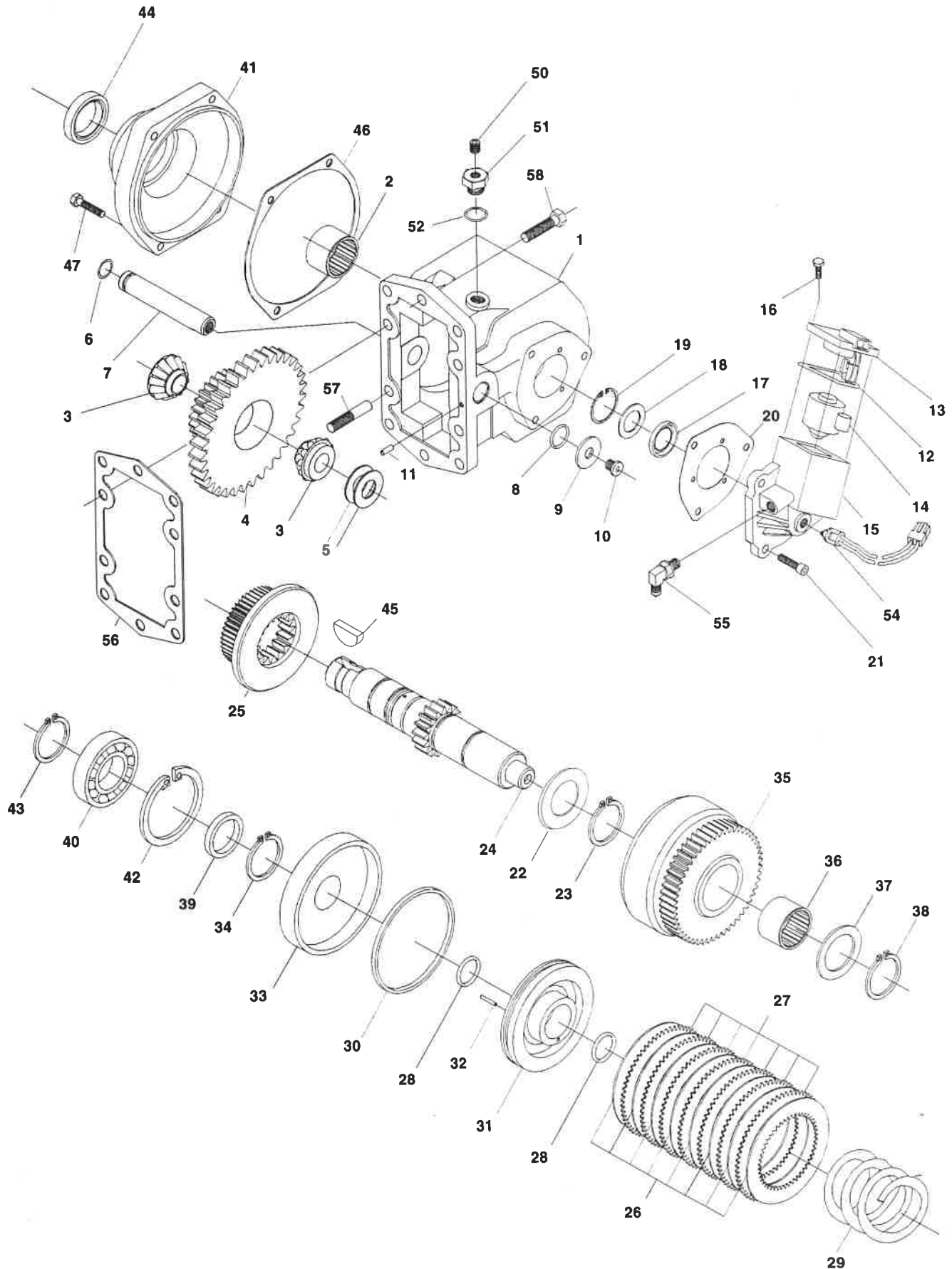
CHELSEA[®]



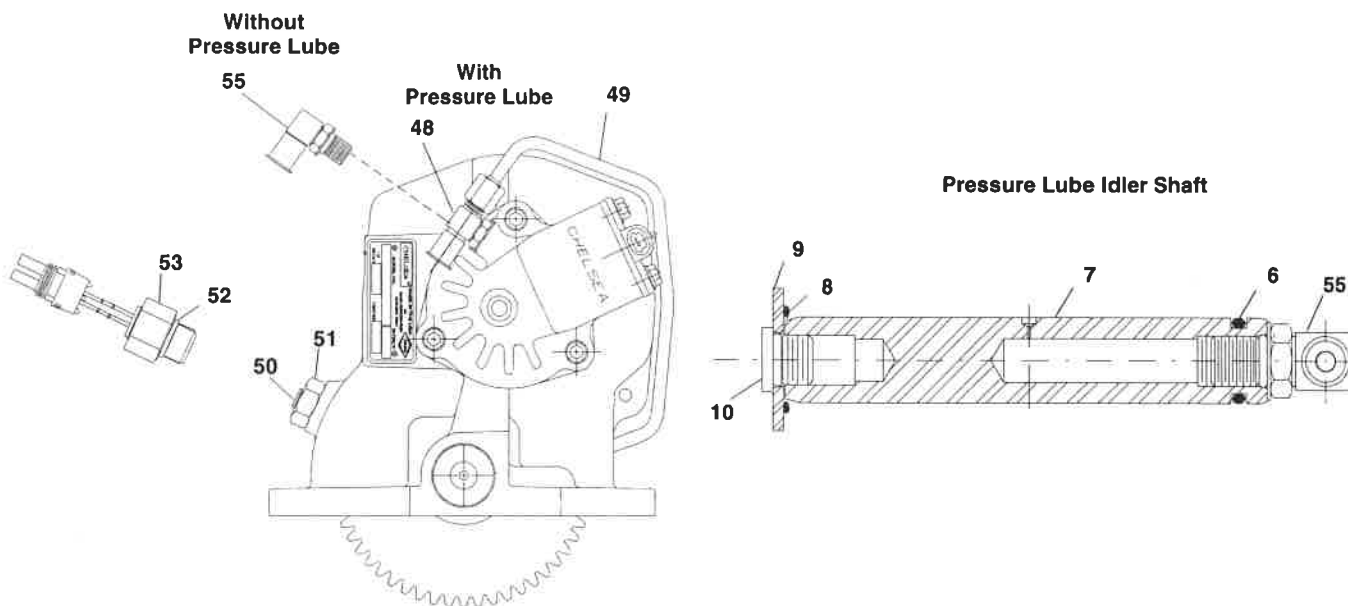




Item No.	Part Number	Description	Quantity
1	1-P-454	HOUSING	1
2	560972	NEEDLE BEARING	1
3	550439	TAPERED BEARING CONE	2
4	See Chart Pg. 6	INPUT GEAR	1
5	14-P-15	SPACERS	A.R.
6	28-P-191	O-RING	1
7	9-P-70	IDLER SHAFT, Standard.	1
	9-P-69	IDLER SHAFT, Pressure Lube	1
8	28-P-190	O-RING	1
9	379505	WASHER	1
10	379484	STRAIGHT THREAD CONNECTOR PLUG	1
11	500597-16	SLOTTED PIN	1
	329145-12X	VALVE AND VALVE CAP ASSEMBLY (12 Volt)	1
	329145-24X	VALVE AND VALVE CAP ASSEMBLY (24 Volt)	1
		Assemblies include items 12 thru 19	
12	28-P-193	BLOCK RING	1
13	329144X	VALVE CAP ASSEMBLY (12 Volt)	1
	329144-1X	VALVE CAP ASSEMBLY (24 Volt)	1
14	379604-1	SOLENOID VALVE (12 Volt)	1
	379604-2	SOLENOID VALVE (24 Volt)	1
15	34-P-123	VALVE CAP	1
16	379565	HEX CAPSCREW	4
17	28-P-119	OIL SEAL	1
18	378811	WASHER	1
19	378849	RETAINING RING	1
20	22-P-92	GASKET, Valve Cap	1
21	378447-6	SOCKET HEAD CAPSCREW	3
	See Chart Pg. 6	OUTPUT SHAFT & CLUTCH ASSEMBLY (Includes items 22 thru 34)	
22	14-P-49	SPACER	1
23	378608	RETAINING RING	1
24	See Chart Pg. 6	OUTPUT SHAFT	1
25	2-P-458	CLUTCH GEAR	1
26	379485	FRICTION DISC	8
27	378684	CLUTCH PLATE	7
28	28-P-244	O-RING	2
29	37-P-39	RETURN SPRING	1
	328965X	PISTON & CYLINDER ASSEMBLY (Includes items 30-32)	
30	28-P-121	BLOCK VEE RING	1
	328676X	PISTON ASSEMBLY (Includes items 31 and 32)	
31	379133	PISTON	1
32	378856	WIGGLER WIRE	1
33	378760	CLUTCH BACK UP CYLINDER	1
34	378576	RETAINING RING	1
		OUTPUT GEAR ASSEMBLY (Includes items 35 and 36)	
	329005-1X	B Ratio	
	329005-2X	D Ratio	
	329005-3X	G Ratio	
	329005-4X	M Ratio	
35	See Chart Pg. 6	OUTPUT GEAR	1
36	560972	NEEDLE BEARING	1



Item No.	Part Number	Description	Quantity
37	31-P-70	THRUST WASHER	1
38	378608	RETAINING RING	1
39	4-P-147	SPACER	1
40	550010	BALL BEARING	1
41	See Chart Pg. 6	BEARING CAP/PUMP FLANGE	1
42	378895	RETAINING RING	1
43	378576	RETAINING RING	1
44	28-P-225	OIL SEAL	1
45	500007-29	WOODRUFF KEY	1
46	22-P-101	GASKET, Bearing Cap	1
47	378447-8	SOCKET HEAD CAPSCREW	4
48	379556	RUN TEE, Pressure Lube Only	1
49	379597	STEEL TUBING, Pressure Lube Only	1
50	379231	PIPE PLUG .125-27 NPTF, w/o E.O.C. Only	1
51	379242	O-RING BOSS PLUG, w/o E.O.C. Only	1
52	28-P-171	O-RING, w/ E.O.C. Only	1
53	379243	SPEED SENSOR, w/ E.O.C. Only	1
54	379502	PRESSURE SWITCH ASSEMBLY	1
55	379486	STRAIGHT THREAD CONNECTOR 90°, w/o Pressure Lube	1
56	35-P-74	MOUNTING GASKET	1
	7170-86X	STUD KIT, Includes items 57 and 58	1
57	379451	GUIDE SCREW	2
58	379453-10	HEX HEAD CAPSCREW	8



276 SERIES PARTS LIST



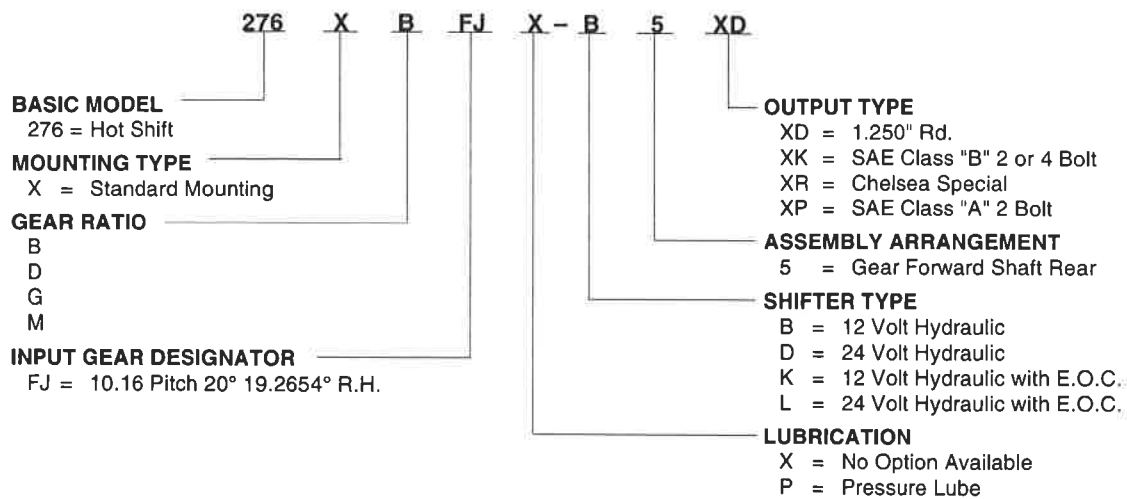
Item No.	Part Number	Description	Quantity
		PARTS SHIPPED LOOSE	
	379486	90° O-RING CONNECTOR	1
	328748X	PUMP MOUNTING KIT, For "XR" Pump Only	1
	328948-9X	GASKET & INSTALLATION INSTRUCTIONS	1
	329075-1X	HIGH PRESSURE HOSE ASSEMBLY	1
	329024-12X	INSTALLATION KIT 12V, Less E.O.C.	1
	329024-24X	INSTALLATION KIT 24V, Less E.O.C.	1
	329076X	INSTALLATION KIT 12V, With E.O.C.	1
	328924-12X	CONTROL BOX 12V, With E.O.C.	1
	328924-24X	CONTROL BOX 24V, With E.O.C.	1
		SERVICE KITS	
	329071-19X	GASKET & SEAL KIT	
	329071-5X	BEARING KIT	
	329071-7X	CLUTCH REPAIR KIT	
	329175-12X	E.O.C. FIELD CONVERSION KIT 12V	
	329175-24X	E.O.C. FIELD CONVERSION KIT 24V	

GEAR CHART

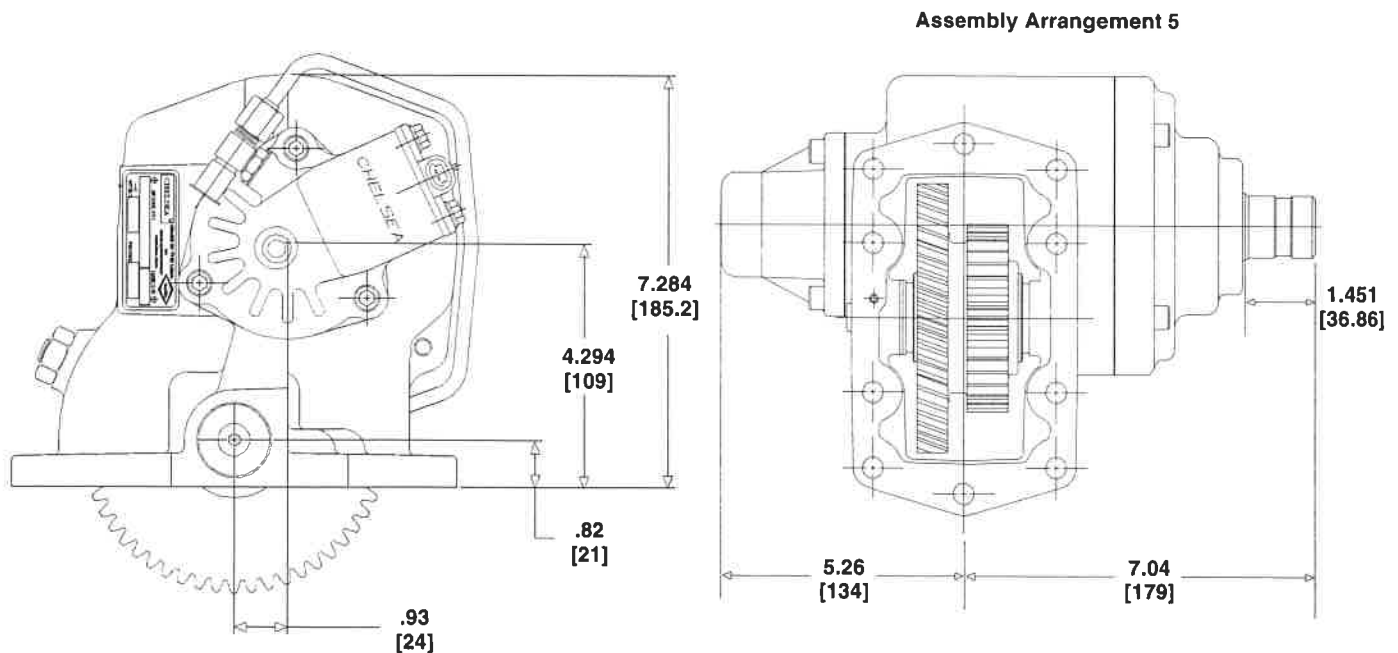
Model No.	Input Gear Part No. Item No. 4	Number Teeth	Output Gear Part No. Item No. 35	Number Teeth
276*BFJ	5-P-912	25	2-P-688	47
276*DFJ	5-P-913	28	2-P-684	44
276*GFJ	5-P-914	31	2-P-683	41
276*MFJ	5-P-915	35	2-P-682	37

OUTPUT SHAFT CHART

Model No.	Output Shaft Item No. 24	Output Shaft & Clutch Ass'y	Bearing Cap/Pump Flange Item No. 41
276*.-***XD	3-P-831	329006-1X	21-P-480
276*.-***XK	3-P-832	329006-2X	21-P-482
276*.-***XP	3-P-832	329006-2X	21-P-568
276*.-***XR	3-P-833	329006-3X	21-P-484

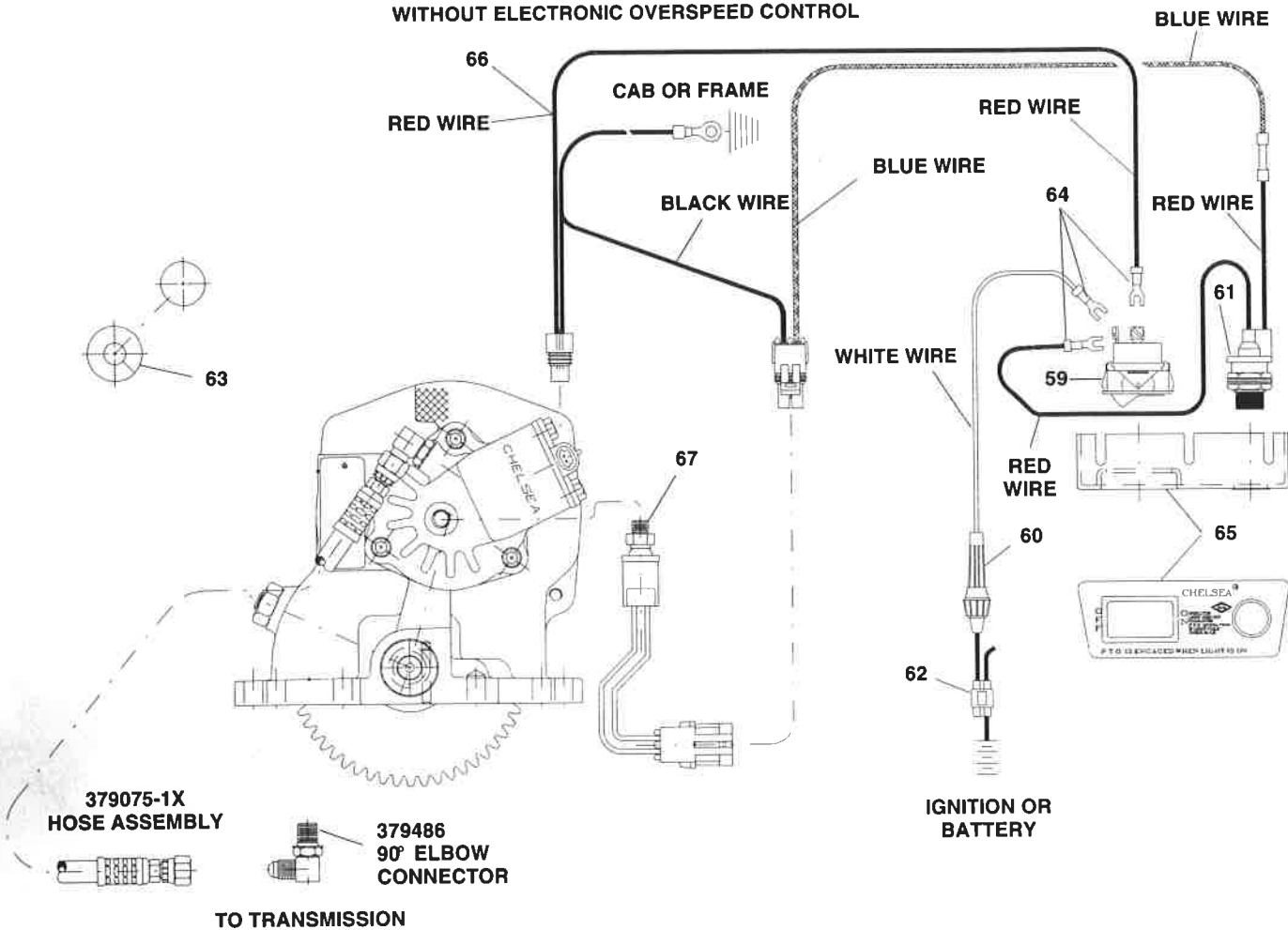


PTO HOUSING DIMENSIONS



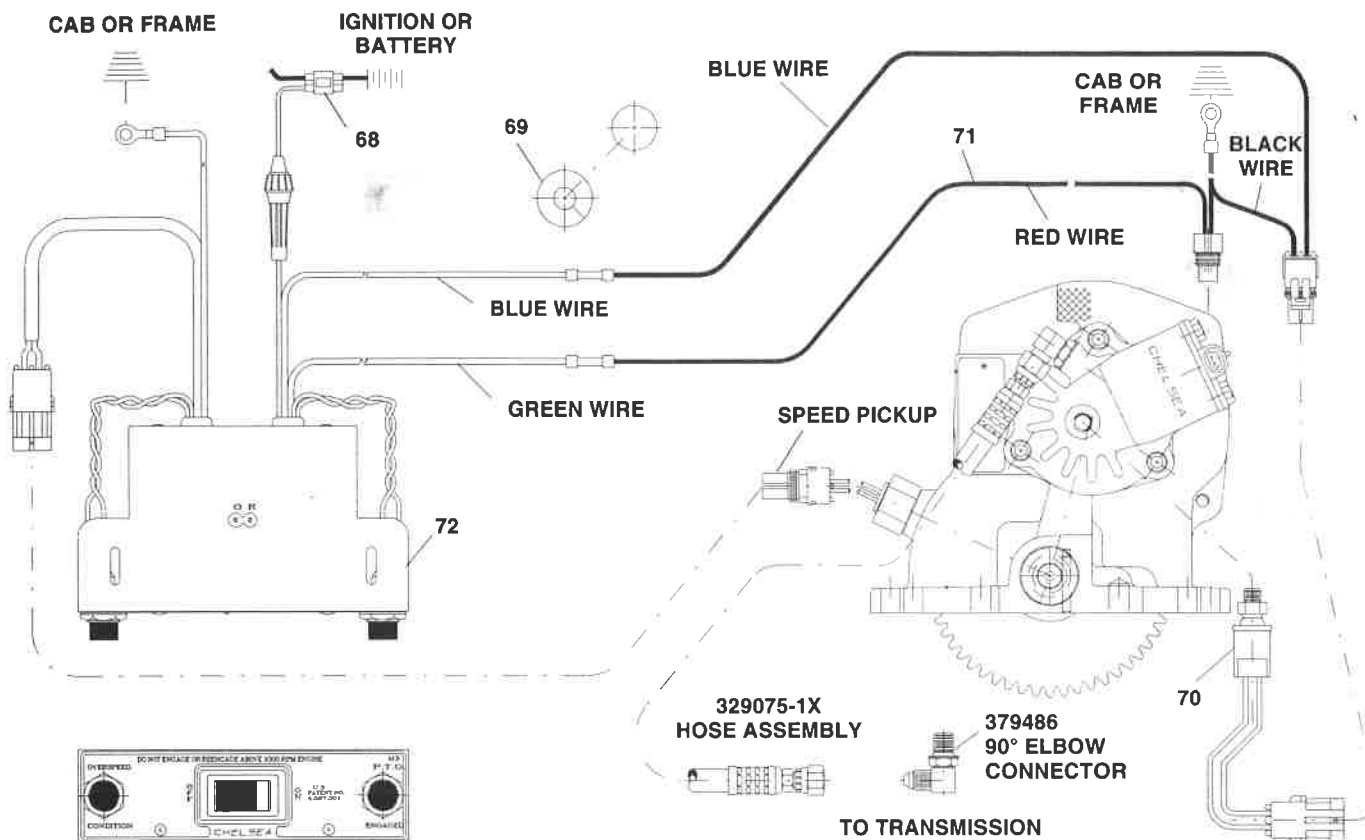
276 SERIES SHIFT INSTALLATION KIT

WITHOUT ELECTRONIC OVERSPEED CONTROL



Item No.	Part Number	Description	Quantity
	329024-12X	12 VOLT SHIFT INSTALLATION KIT	1
	329024-24X	24 VOLT SHIFT INSTALLATION KIT	1
59	378881	SWITCH	1
60	378884	FUSE, 9 Amp	1
61	378978	INDICATOR LIGHT, 12 Volt.	1 or
	379005	INDICATOR LIGHT, 24 Volt.	1
62	379257	CONNECTOR, Splice	1
63	379265	GROMMET	1
64	379306	FORK CONNECTOR	3
65	379336	BRACKET	1
66	379504	VALVE CONNECTOR & WIRE	1
67	379502	PRESSURE SWITCH	1

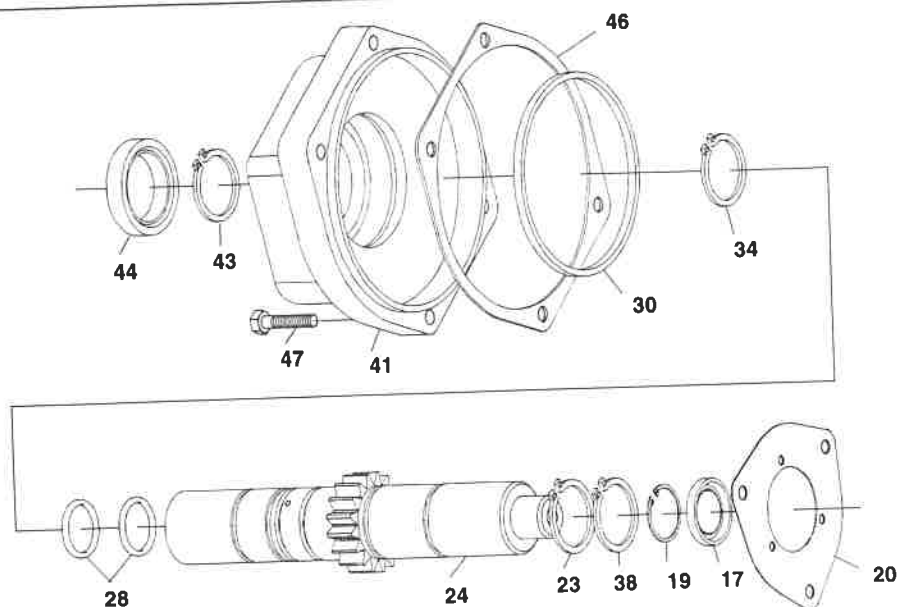
WITH ELECTRONIC OVERSPEED CONTROL



Item No.	Part Number	Description	Quantity
	329076X	SHIFT INSTALLATION KIT	1
68	379257	CONNECTOR, Splice	1
69	379265	GROMMET	1
70	379502	PRESSURE SWITCH	1
71	379504	VALVE CONNECTOR & WIRE	1
N.S.	379252	BUTT CONNECTOR	1
N.S.	379061	WIRE TIE	6
72	328924-12X	CHELSEA E.O.C., 12 Volt.	1
	328924-24X	CHELSEA E.O.C., 24 Volt.	1
	329175-12X	E.O.C. FIELD CONVERSION KIT, 12 Volt (Includes 329076X and items 52, 53 and 72)	
	329175-24X	E.O.C. FIELD CONVERSION KIT, 24 Volt (Includes 329076X and items 52, 53 and 72)	

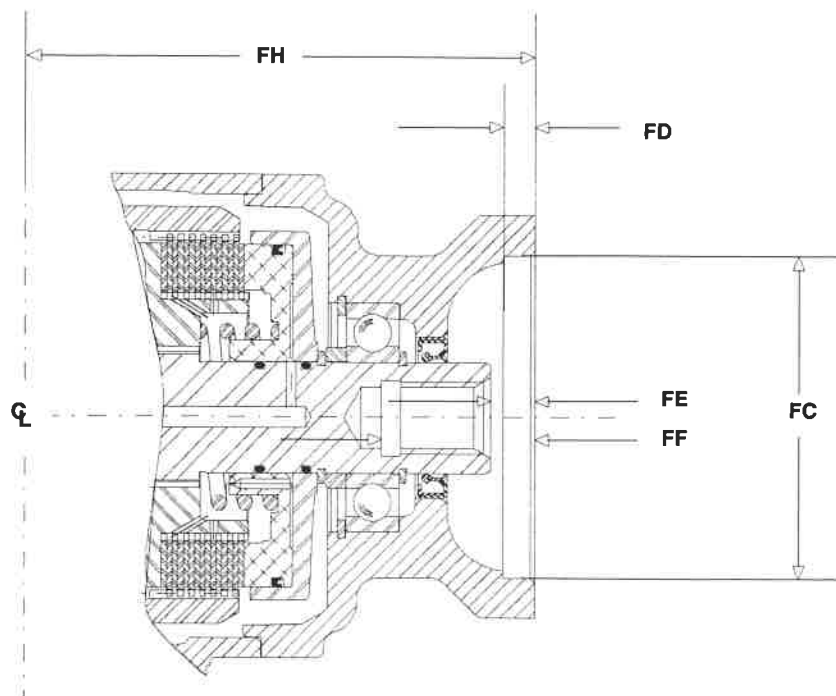
N.S. — Not Shown

276 SERIES PUMP CONVERSION KIT BILL OF MATERIAL



Item No.	Part Number	Description	Quantity
		PUMP FIELD CONVERSION KIT	
	329160-21X	"XK" Output	
	329160-22X	"XR" Output	
	329160-23X	"XP" Output	
17	28-P-119	OIL SEAL, High Pressure	1
19	378849	RETAINING RING	1
20	22-P-92	GASKET, Valve Cap	1
23	378608	RETAINING RING	1 or
24	3-P-832	OUTPUT SHAFT, XK & XP Outputs	1
	3-P-833	OUTPUT SHAFT, XR Output.	2
28	28-P-244	O-RING.	1
30	28-P-121	BLOCK VEE RING.	1
34	378576	RETAINING RING	1
38	378608	RETAINING RING	1 or
41	21-P-482	PUMP FLANGE, XK Output.	1 or
	21-P-484	PUMP FLANGE, XR Output.	1
	21-P-568	PUMP FLANGE, XP Output.	1
43	378576	RETAINING RING	1
44	28-P-225	OIL SEAL	1
46	22-P-101	GASKET, Bearing Cap.	4
47	378447-8	SOCKET HEAD CAPSCREW	1
N.S.	328748X	PUMP MOUNTING KIT, XR Output Only	

N.S. — Not Shown



Pump Flange Suffix	Bolt Circle Dia.	BOLT HOLES		FC	FD	FE	FF	FH	OUTPUT SHAFT	Keyway Width
		Tapped Hole	No. Equally Spaced	Female Pilot Diameter	Pilot Depth	Face to end of Shaft	Face thru Hole	Face to Center of PTO	Hole Dia.	
XK	5.00	.500"-13	4	4.003	.406	.562	1.940	6.410	7/8"-13 Spline	-
	5.75	.500"-13	2	4.003	.406	.562	1.940	6.410	7/8"-13 Spline	-
XP	4.188	.500"-13	2	3.253	.344	.562	1.940	6.410	7/8"-13 Spline	-
XR	3.71	.312"-18	4	2.752	.281	N/A	N/A	5.860	7/8"-13 Spline	-